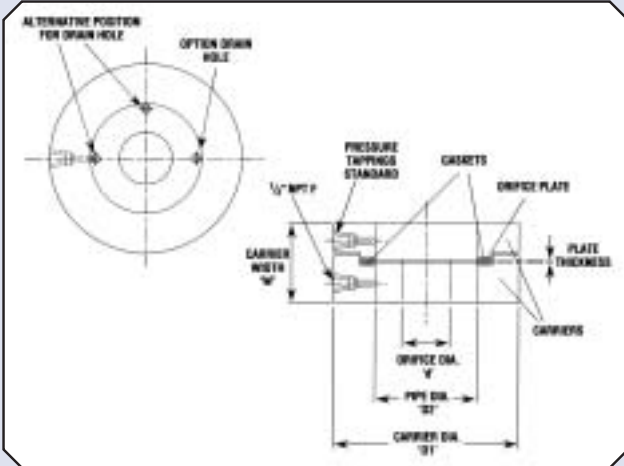


DP Primary Flow Sensors Orifice Plates and Carriers



In some applications, it is difficult to provide the necessary pressure tapings onsite in the pipework. In these instances, it is advisable to use an orifice carrier.

The pressure tapings are provided as an integral part of the carrier and are normally supplied as flange tapped for ease of rodding if scale deposits should occur.

The orifice plate is positioned between the two halves of the carrier, which in turn is held between the flange bolts of the existing pipework. All types of slip orifice plate can be fitted into these carriers.

There is also the option of a single piece carrier design, where the plate and the carrier are manufactured from a single billet of material. Single piece carriers normally have corner tapings.

Pressure Tapings	Carrier Width 'W' mm
1/8" BSPP	84.4mm
1/4" NPT	88.4mm
1/2" NPT	96.0mm
Integral	38mm

MATERIALS OF CONSTRUCTION

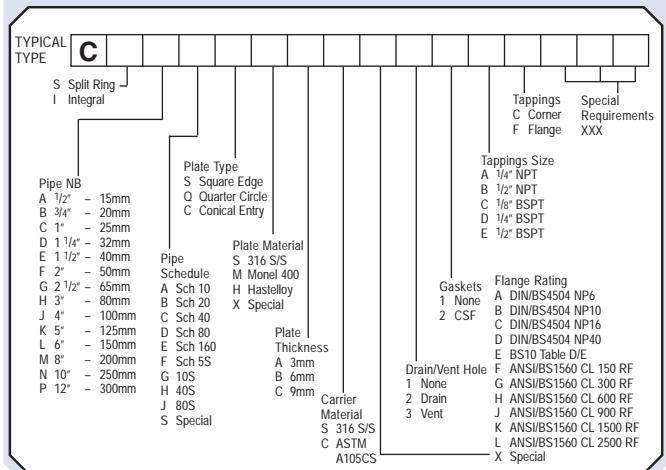
The standard material for the plate is 316 Stainless Steel, with alternative materials such as Monel 400 or Hastelloy C available. The carrier material can be painted carbon steel, 316 stainless steel, Monel 400 or Hastelloy C.

Standard gasket material is CSF but alternatives are readily available.

Information Required when Ordering

- Fluid Type
- Max Flow (If fluid is gas state if conditions are ACTUAL, STANDARD or NORMAL)
- Normal Flow
- Operating Pressure
- Operating Temperature
- Viscosity
- Specific Gravity or Density
- Type of Tapings (CORNER, FLANGE)
- Orifice type: Square edged, Conical entrance or Quarter Circle
- Exact Line ID or Pipe Specification
- Differential Pressure Requirement
- Tag number
- Flange Rating and Orifice bore to be marked on periphery of carrier
- Width of Carrier Assembly as below for 3mm thick orifice plates

CODE NUMBER SYSTEM



Every effort has been made during the preparation of this document to ensure the accuracy of statements and specifications. However, we do not accept liability for damage, injury, loss or expense caused by errors or omissions made. We reserve the right to withdraw or amend products or documentation without notice.



0043



CT PLATON SAS

Immeuble Le Saint Clair
BP 70-213
42013 Saint Etienne Cédex 2
France
Tel : +33(0)477 410 688
Fax : +33(0)477 570 421
sales@ctplaton.com
www.ctplaton.com



CERTIFICATE NO. 22358