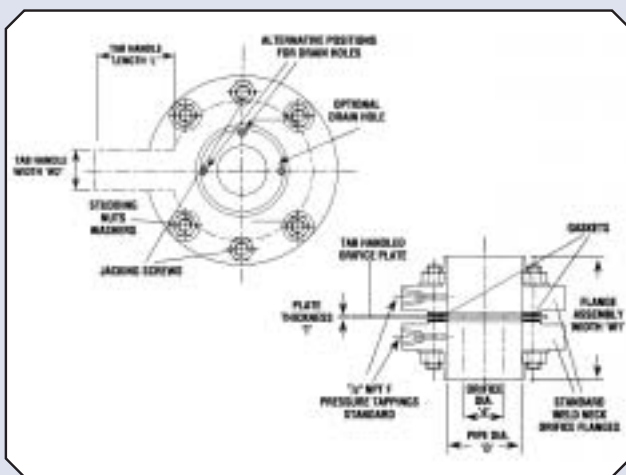


### DP Primary Flow Sensors Weld Neck Orifice Flanges



Weld neck Orifice Flange Assemblies include integral pressure tappings as part of the mounting flanges. They are ideally suited to some steam flow applications where the whole assembly is butt welded directly into the line, the flanges being permanently fixed. The orifice plate may be removed for inspection or changed by loosening the nuts and bolts, while at the same time tightening the jacking screws to force the flanges apart.

The orifice plates used are the same as those available as slip orifice plates.

#### MATERIALS

Flanges	ASTM A 105 carbon Steel ASTM A 182 F316L
Gaskets	Spiral Wound or CSF
Stud Bolts	ASTM A 193 GR B7 B8M S/S
Hex Nuts	ASTM A 194 GR 2H 8M S/S

Supplied with jacking bolts and plugs.

#### MATERIALS OF CONSTRUCTION

The standard material for the plate is 316 Stainless Steel, with alternative materials such as Monel 400 or Hastelloy C.

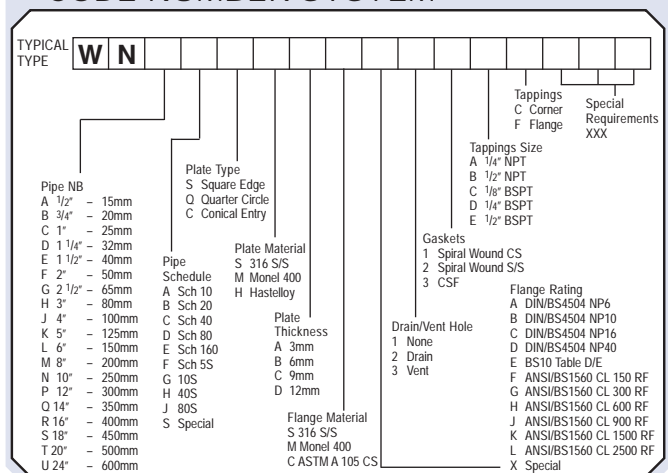
The flanges are forged carbon steel or Stainless Studding, nuts, bolts are either tensile carbon steel or stainless steel.

The gaskets are CSF or Spiral Wound

#### Information Required when Ordering

- Fluid Type
- Max Flow (If fluid is gas state if conditions are ACTUAL, STANDARD or NORMAL)
- Normal Flow
- Operating Pressure
- Operating Temperature
- Viscosity
- Specific Gravity or Density
- Type of Tappings (CORNER, FLANGE)
- Orifice type: Square edged, Conical entrance or Quarter Circle
- Exact Line ID or Pipe Specification
- Tag number to be marked on handle
- Flange Rating and Orifice bore to be marked on handle
- Differential Pressure Requirement

#### CODE NUMBER SYSTEM



Every effort has been made during the preparation of this document to ensure the accuracy of statements and specifications. However, we do not accept liability for damage, injury, loss or expense caused by errors or omissions made. We reserve the right to withdraw or amend products or documentation without notice.



0043



#### CT PLATON SAS

Immeuble Le Saint Clair  
BP 70-213  
42013 Saint Etienne Cédex 2,  
France

Tel : +33 (0)139 354 400

Fax : +33 (0)139 354 401

Email : [sales@ctplaton.com](mailto:sales@ctplaton.com)

Web : [www.ctplaton.com](http://www.ctplaton.com)



CERTIFICATE NO. 22358